



*The most advanced technology
in mobile lighting*

**Glare Free, Daylight Quality
High Performance, 360°
Contrast - Definition - Clarity
Turns Night into Day**



EMERGENCY • RESCUE • RECOVERY



- A range of mobile lighting solutions for first responders, disaster relief and emergency requirements
- Illuminate areas from approx. 250 to 50,000m²
- Towed and non-towed products have been designed to facilitate the roles of emergency responders
- Minimize set up time, footprint area and logistics

www.lunarlighting.com.au



RESCUE, EMERGENCY & RECOVERY

Lunar Lighting® provides a range of high performance mobile lights designed for rescue, emergency and recovery situations; including earthquakes, fire, landslides, transport disasters, traffic accidents, violent weather incidents and infrastructure emergencies.

Light field can be changed from 360° to 180° in minutes for controlled areas such as airports, or where light is restricted to below a horizontal plane. Towed and non-towed products are available.

With its striking contrast, definition and clarity, HMI lighting is the film-maker's choice for capturing true color and detail. We have used this concept to make this significant benefit available to critical, real-life scenarios. Lunar's lights deploy quickly to bathe the disaster scene in natural light, helping first responders identify casualties and potential hazards and obtain detailed images for relay to command centers.

The 12V Lunar BakPak is a lightweight 8kg over-the-shoulder illumination system that generates 250m² of glare free 360° daylight quality illumination. Individual workers are able to enter disaster areas keeping both hands free to focus on their essential time critical work. The unit integrates a long lasting HID globe and compact 1kg battery into a wearable, all-terrain solution. Rechargeable from vehicle or main power and with 4 hours of operation per charge, BakPaks make ideal front line companions. Spare batteries are available.

1200W HMI and 2000W Halogen Lunar Lights

These lightweight units provide approx. 2000 and 3000m² respectively of clean, glare free light. Can be mounted onto fire trucks, equipment, machinery and tripods. Sets up in minutes.

2000W Halogen Lunar Light

NSN 6230-66-154-6218

Part Number 2KHLL Portable set

They are stored in impact resistant road cases and can be easily handled by one person and transported in a car. No towing. Power by electrical main line or a small generator.

1200W HMI Lunar Light

Features similar performance to the lighting used in movie productions. This important quality assists first responders in identifying casualties, locating potential hazards and photographing or recording the disaster area.



4000W HMI Lunar Light

Produces 360° crisp white daylight. Lumen output is 380,000 which is approx. 4 times more than conventional lighting towers. The 4000W unit can be used only with the light head to reach areas inaccessible by conventional lighting towers. This is important where space and accessibility in a disaster area may be limited. This configuration can be transported in a car.

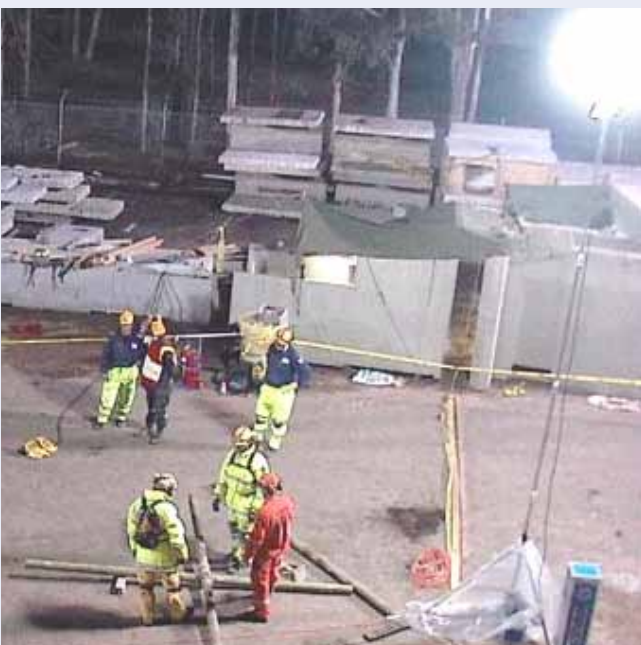


12,000W HMI Lunar Lighting® Tower

Produces approx. 1.2 million lumens which is approx. 12 times more than conventional lighting towers, yet uses approx. 2.5L of fuel per hour and delivers at least 100 hours continuous operation from the 250L fuel tank. Light is directed 360° (with an option to change over to 180° in minutes); coverage is approx. 50,000m².

HMI light sources are used in movie productions because they meet stringent film industry requirements of contrast, clarity and definition. This same feature assists first responders to identify casualties, potential hazards and photograph or record the disaster area.

Glare free daylight reproduction (6000°K color temperature). The extensive light field means one unit can replace several conventional lighting towers. Minimize footprint, transport, fuel consumption, fuel storage and set up. The cabinet is equipped with internal lighting, allowing the unit to be set up in darkness. Stable in winds up to 100km per hour. Telescopic mast rises up to 10m.



Easily towed using a 4WD vehicle. The four hydraulic stabilizer legs are individually adjustable to cope with any uneven terrain at the scene. Set up is simple with push button controls. Ruggedness and high performance make it the choice of demanding users.

NSN 6230-66-154-6202

Part Number 12KWLLT Light Tower

Hot restrike capability, no need to wait for the globe to cool down before restriking.



PRODUCTS AT A GLANCE

	Approx. Light area (m ²)	Tow	Weight (kg)	Glare Free	Set up	Hot Restrike
12,000W HMI Lunar Lighting® Tower	50,000	Yes	1,900	Yes	5 minutes 1 person easy push button control	Yes
4000W HMI Lunar Light	10,000	No	100	Yes	5 minutes 1 person	Yes
2000W Halogen Lunar Light	2,000	No	20	Yes	5 minutes 1 person	Yes
1200W HMI Lunar Light	3,000	No	45	Yes	5 minutes 1 person	Yes
Lunar BakPak	250	No	8	Yes	5 minutes 1 person	Yes

RESCUE AND RECOVERY APPLICATIONS

A massive **landslide** at a Australian at a ski resort collapsed many buildings, leaving people trapped inside. Civil defense authorities asked Lunar Lighting® to illuminate the search and rescue operations, allowing responders to work ceaselessly over several days and nights.

When a **train derailed** in a rugged valley, rescue crews were faced with difficulties reaching and illuminating the accident site. Lunar Lighting® provided the solution with its 2000W units. Their compact size made for easy and rapid deployment both inside and around the derailed carriages.

Infrastructure failure. Lunar Lighting's® lights perform in all weather conditions, making them ideal for use during power failures, industrial accidents and crisis situations, in addition to recovery following storms, floods, wildfires, tornadoes and hurricanes.

Fire, Emergency and Rescue Services rely on Lunar Lighting's® mobile systems due to their ease of transport, deployment and reliability.

Police and Security Response. For traffic incidents, Lunar Lighting® provides the state-of-the-art solution with 360° glare free lighting that reduces glare for oncoming traffic, dramatically improving safety for personnel at the roadside. Units are carried in a vehicle, have a minimal footprint and set up in only a few minutes.

Lunar BakPaks are ideal for police searches and **forensic** investigations. Fast and simple to deploy, the 360° glare free illumination field provides operators with approx. 250m² of mobile, high quality light while leaving both hands free.





EMERGENCY • RESCUE • RECOVERY



www.lunarlighting.com.au

Email: lunar@lunarlighting.com.au

Tel. 1300 586 271

Lunar Lighting Pty Ltd

© Lunar Lighting Pty Ltd 2014 All rights reserved.
Information in this brochure may be subject to change at any time without notice.
LUNAR LIGHTING® is registered as a trade mark to Lunar Lighting Pty Ltd.